


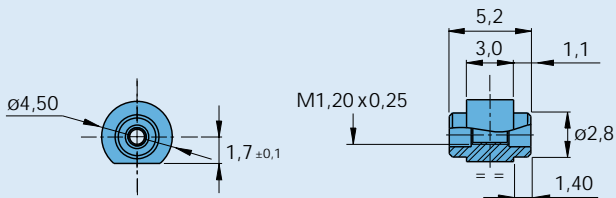
Lead Screw

Optional nuts and bearings
PRECiStep® Technology

Options


For M1,2 x 0,25 Lead screws

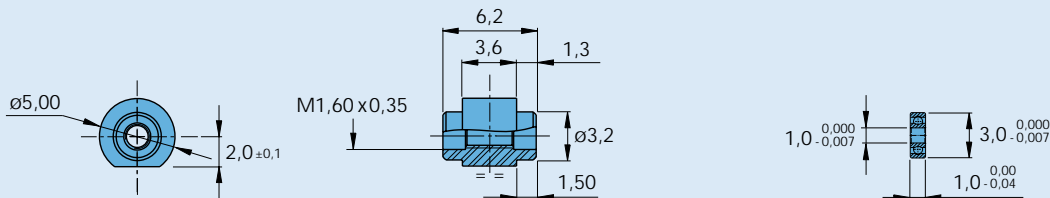
Scale 2:1 



Nut Part No. 2.8000.08.351, Material CuAl10Ni5Fe4

For M1,6 x 0,35 Lead screws

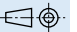
Scale 2:1 

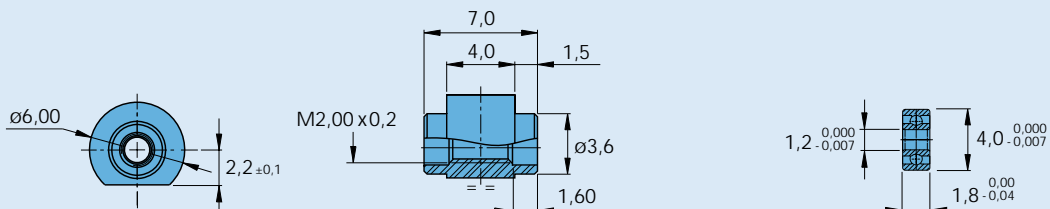


Nut Part No. 2.8000.90.510, Material CuAl10Ni5Fe4

Bearing for leadscrew tip Part No. 2.8000.08.401

For M2,0 x 0,2 Lead screws


Scale 2:1 

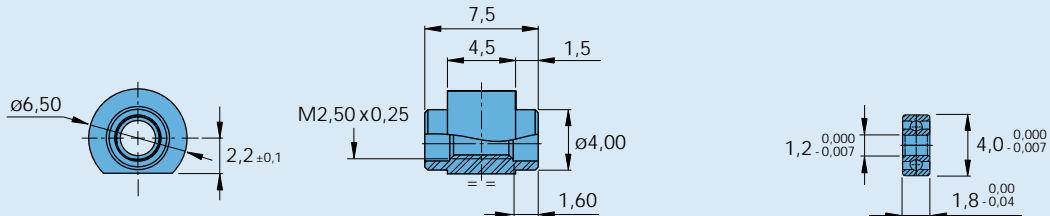


Nut Part No. 2.8000.08.353, Material CuAl10Ni5Fe4

Bearing for leadscrew tip Part No. 2.8000.10.401

For M2,5 x 0,25 Lead screws

Scale 2:1 

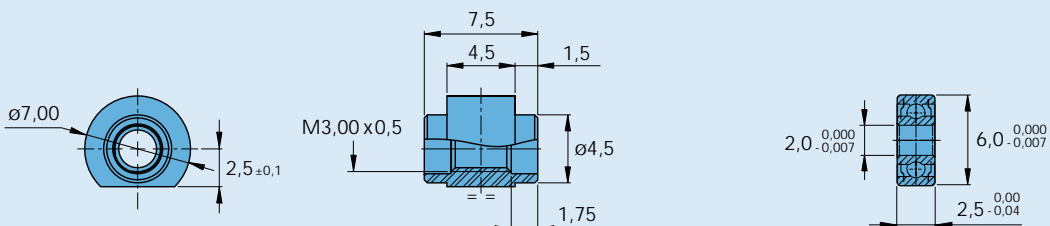


Nut Part No. 2.8000.90.511, Material CuAl10Ni5Fe4

Bearing for leadscrew tip Part No. 2.8000.10.401

For M3,0 x 0,5 Lead screws

Scale 2:1 



Nut Part No. 2.8000.15.340, Material CuAl10Ni5Fe4

Bearing for leadscrew tip Part No. 2.8000.22.450